



WARM UP

Match the inventor to his invention.

- | | |
|-------------------|--------------------------|
| 1. James Watt | a. Steel making process |
| 2. Thomas Edison | b. Discovery of bacteria |
| 3. Henry Bessemer | c. Steam engine |
| 4. Eli Whitney | d. Light bulb |
| 5. Louis Pasteur | e. Cotton gin |

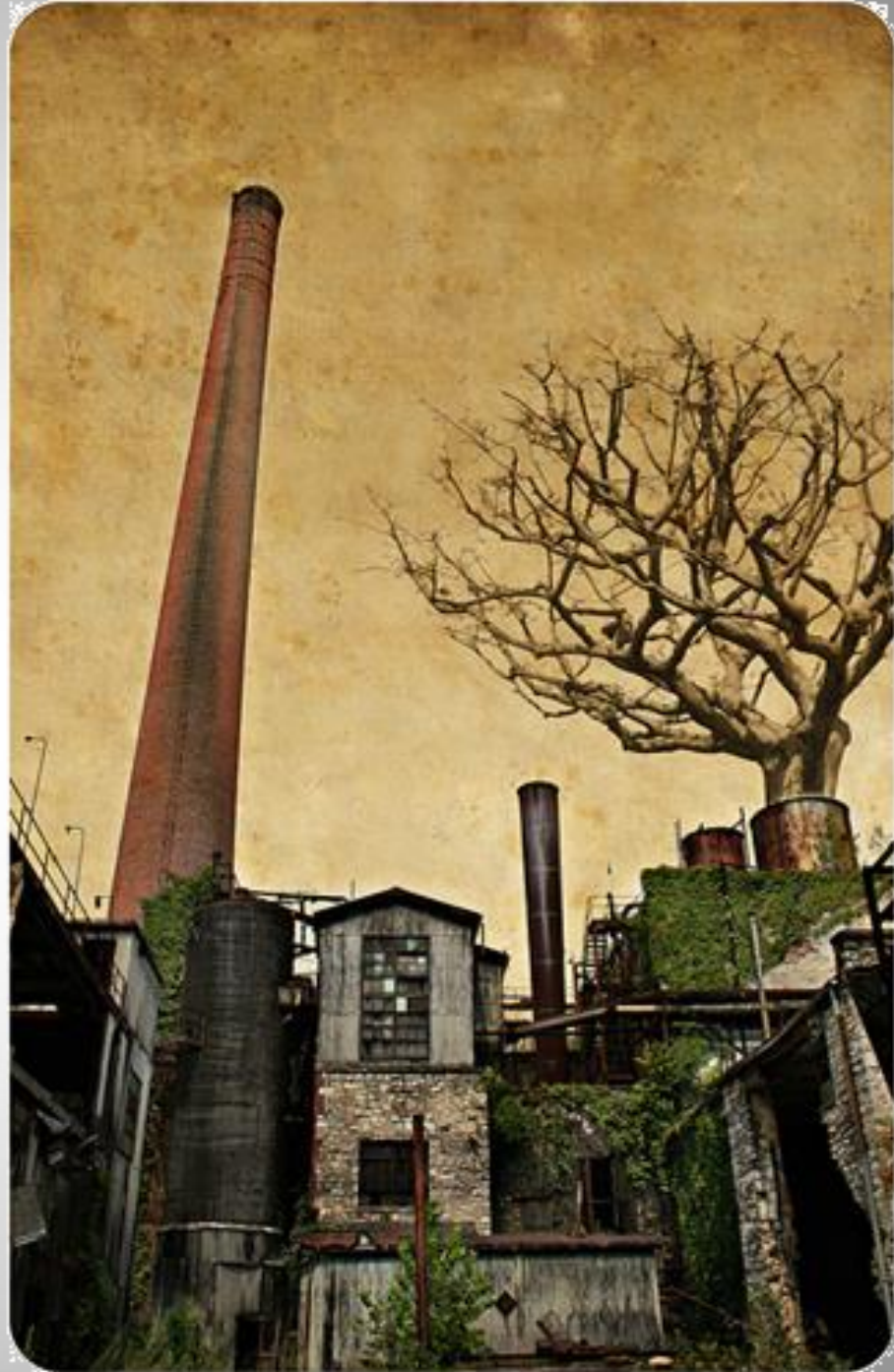


WARM UP

Match the inventor to his invention.

- | | | |
|-------------------|---|--------------------------|
| 1. James Watt | C | a. Steel making process |
| 2. Thomas Edison | D | b. Discovery of bacteria |
| 3. Henry Bessemer | A | c. Steam engine |
| 4. Eli Whitney | E | d. Light bulb |
| 5. Louis Pasteur | B | e. Cotton gin |

EFFECTS OF THE INDUSTRIAL REVOLUTION



IMPACT OF THE INDUSTRIAL REVOLUTION

POSITIVE

NEGATIVE



POOR WORKING CONDITIONS FOR THE LOWER CLASSES



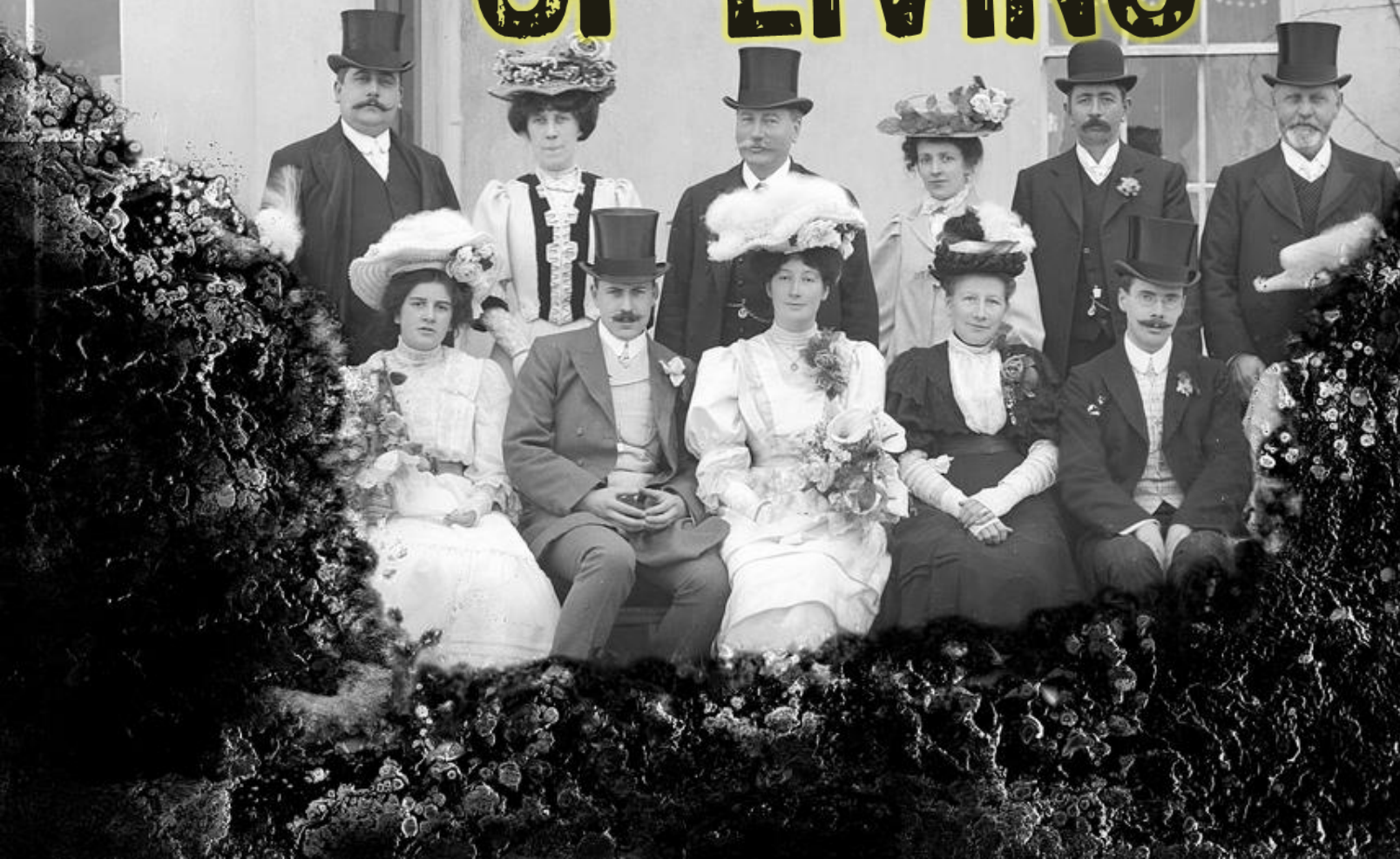
MORE AND BETTER EDUCATION



BETTER FORMS OF TRANSPORTATION

A vintage steam locomotive, numbered 21, is the central focus of the image. It is a black and white photograph with a sepia or aged tone. The locomotive is positioned on a set of railroad tracks that recede into the distance. To the left of the locomotive, a portion of a passenger train car is visible. The locomotive itself has a large, dark smokestack at the front, a prominent headlight, and various mechanical details like pipes, valves, and a bell. The wheels are large and spoked. In the background, there are trees with some autumn-colored foliage and a clear sky. The overall composition is a classic historical photograph of a steam train.

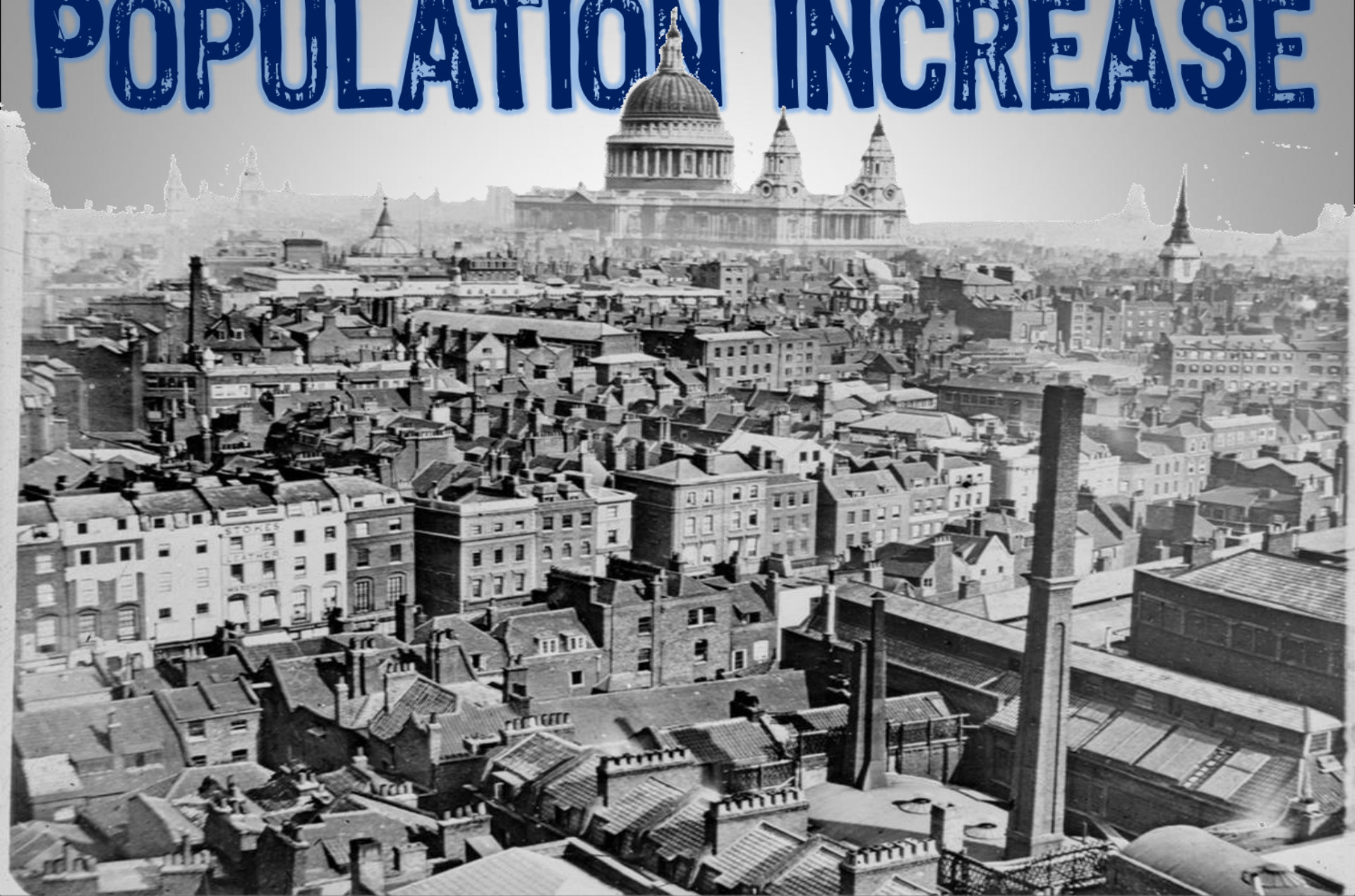
HIGHER STANDARD OF LIVING



ENVIRONMENTAL POLLUTION



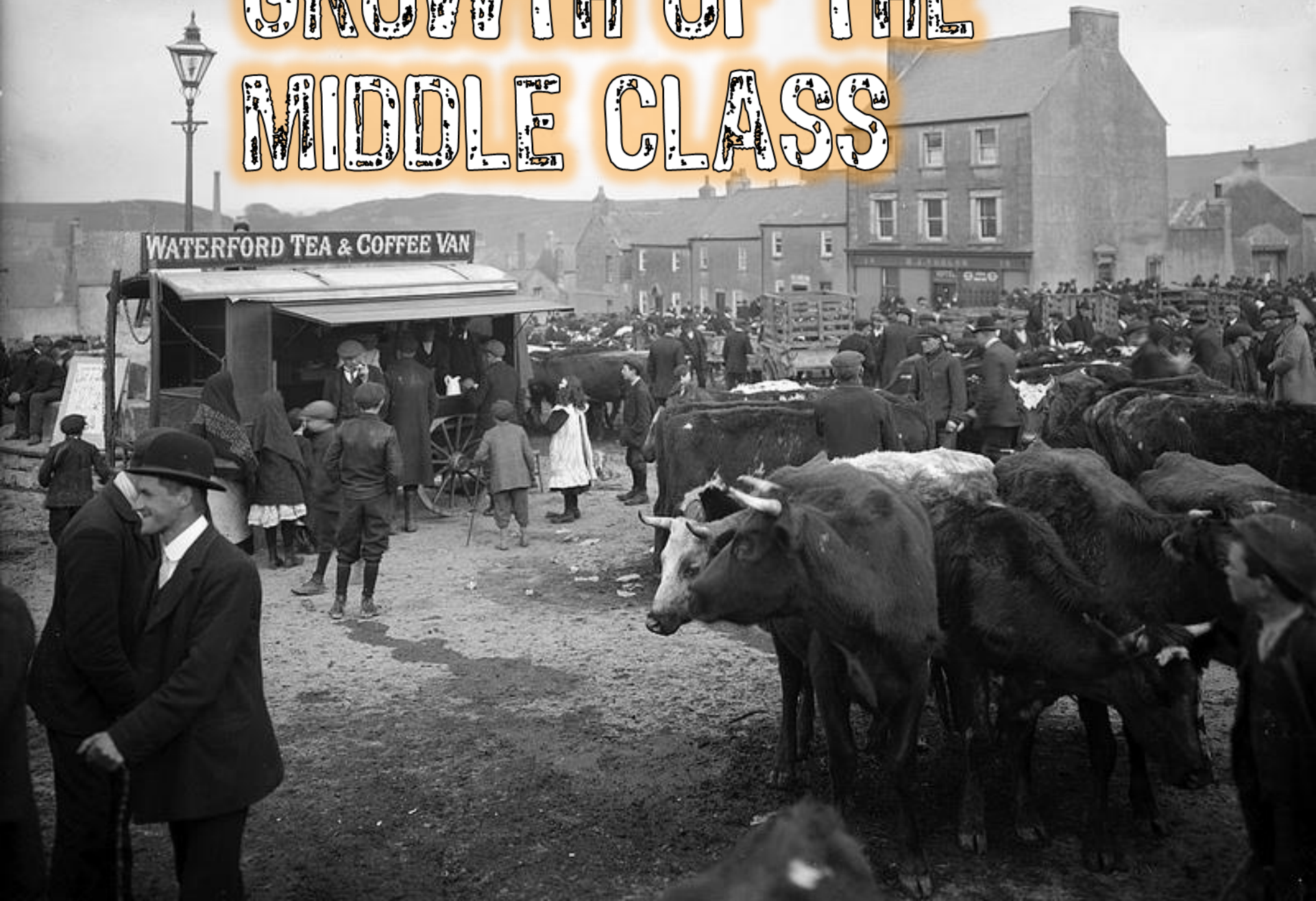
POPULATION INCREASE





URBANIZATION

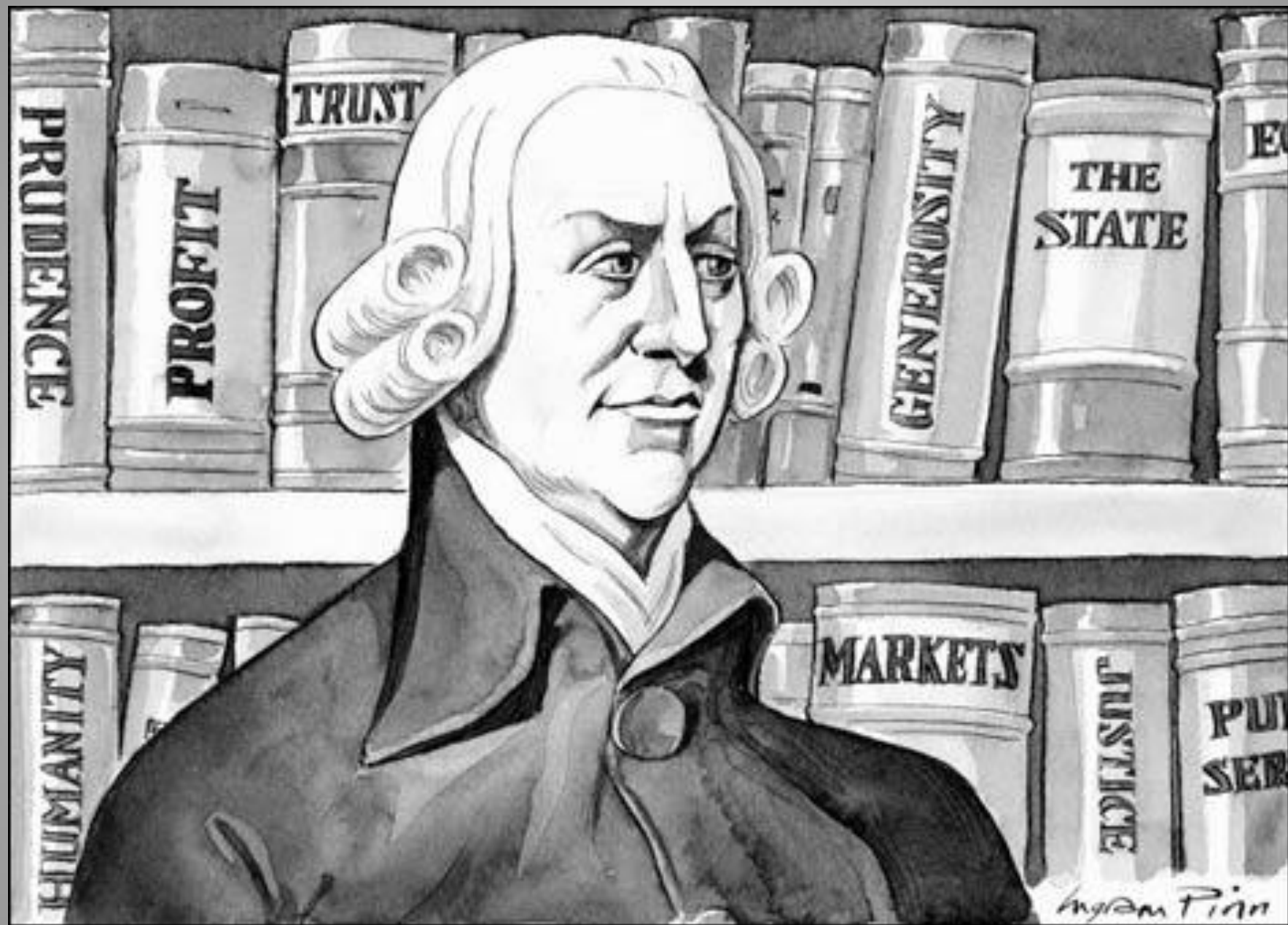
GROWTH OF THE MIDDLE CLASS



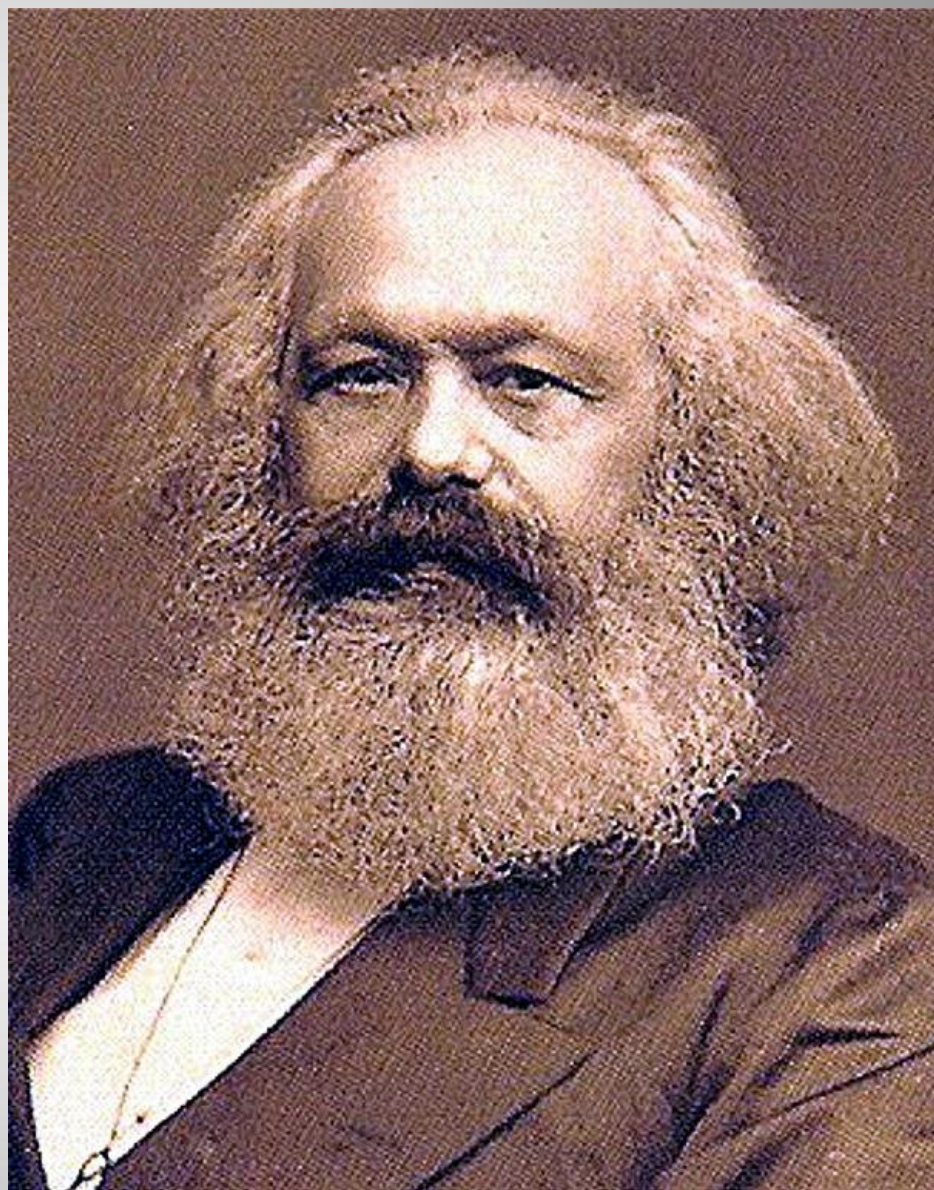
ECONOMIC SYSTEM WHICH
PROPERTY IS PRIVATELY
OWNED AND INDUSTRY IS
CONTROLLED AND IS PAID
ACCORDING TO THEIR
ABILITY AND NEEDS

CAPITALISM
VS. COMMUNISM





**“IT IS NOT FROM THE
BENEVOLENCE OF THE
BUTCHER, OR THE BAKER
THAT WE EXPECT OUR
DINNER, BUT FROM THEIR
REGARD TO THEIR OWN
INTEREST.” - ADAM SMITH**



**“THE PROLETARIAT HAVE
NOTHING TO LOSE BUT
THEIR CHAINS. THEY HAVE A
WORLD TO WIN. WORKINGMEN
OF THE COUNTRIES, UNITE!”**

- KARL MARX



Complaints of unequal wealth
Redistribution of wealth
Factors of
The Communist Manifesto
Production

CAPITALISM VS. COMMUNISM

What is Socialism?

Karl Marx's Transition to Communist Society

"From each according to his ability - to each according to his needs"

